

ACCOMMODATION COMPRISES

- Entrance
- Open plan living, kitchen and bedroom
- Separate bathroom

APARTMENT SIZE

Type C: 37 – 39.3 m²
Type A: 36 m²

DEPOSIT

1.5 months rent

COUNCIL TAX BAND

Band C

EPC RATING

B

TYPE OF TENANCY

Private residential tenancy

GOOD TO KNOW

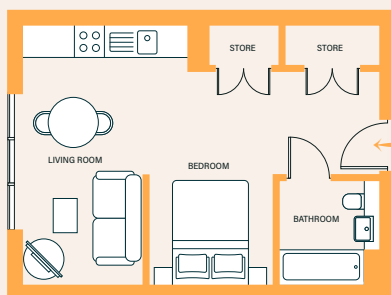
- Tenants are responsible for the payment of utilities as well as council tax
- 100Mb superfast broadband is included in your rent
- All tenancy applications subject to referencing

These images represent Apartment Type C. Please enquire for other types available.

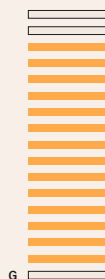


Floorplan

TYPE C



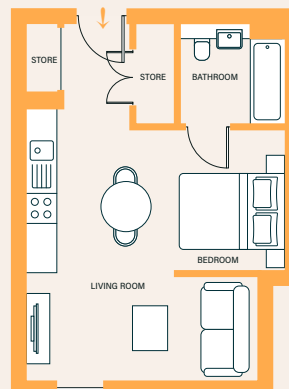
SIZE: 37 - 39.3 M²



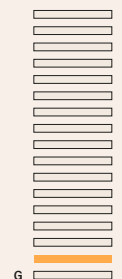
1ST-14TH FLOOR

Floorplan

TYPE A



SIZE: 36 M²



1ST FLOOR

Disclaimer: Please note floor plans are not drawn to scale

Furniture included

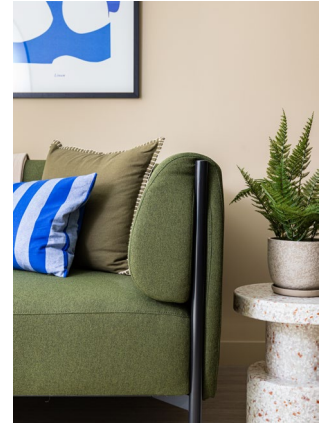
Our interior designers have curated a premium-quality furniture package including bespoke pieces all set up and ready for when you move in. Prefer to BYO? Nae bother. Speak to a member of our team to see if we have any unfurnished options still available.



DINING TABLE & CHAIRS



DOUBLE BED & BED SIDE TABLE



SOFA

LIVING AREA

Our spacious living area comes all set with designer furniture, ready for you to get going from the very start. The bespoke furniture includes a sofa, coffee table, TV unit with storage, dining table, & dining chairs.

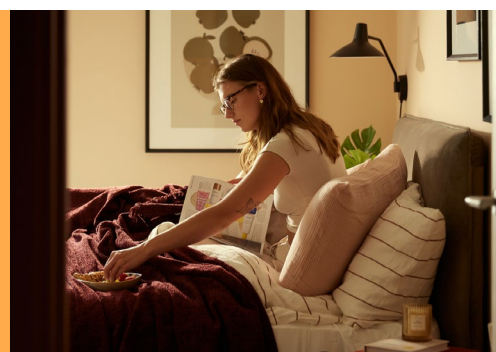
BEDROOM

Enjoy your double size ottoman bed with gas-lift storage base and bespoke bedside tables. There's also plenty of storage with two large fitted cupboards.

There's loads of great perks that come as standard with your apartment.

24/7 on-site team
Parcel store
Secure tenancies
Free broadband
Designer furniture
Resident events
Free to decorate*
Pet friendly**

**Central
 location**



**Pets are
 welcome**

*IMAGES ARE INDICATIVE ONLY

*We offer flexibility to decorate your apartment – terms and conditions
 **Some of our apartments are pet friendly – terms and conditions apply

Want to book a viewing or need to find out more? Contact our team today on 0141 648 1196.